



An Oshkosh Corporation Company

Supplement

External Fall Arrest System

PN - 3128935

May 03, 2018 - Rev G

ANSI

CE



AS/NZS



An Oshkosh Corporation Company

REVISION LOG

Original Issue	A - November 17, 2004
Revised	B - November 16, 2005
Revised	C - February 2, 2011
Revised	D - July 27, 2015
Revised	E - August 18, 2016
Revised	F - November 10, 2016
Revised	G - May 03, 2018

SECTION NO.	TITLE	PAGE NO.
SECTION 1	- INSPECTION, CARE, AND USE OF EXTERNAL FALL ARREST SYSTEM	
1.1	Product Use.....	1-1
1.2	General.....	1-3
	External Fall Arrest System Types.....	1-3
1.3	Inspection Before Use.....	1-3
	Inspecting Line Tenser.....	1-4
	Inspecting Slip Indicator.....	1-4
	Inspecting the Shuttle Type Fall Arrest System for a Fall Occurrence.....	1-5
1.4	Annual Inspection and Service.....	1-5
1.5	Installation.....	1-6
1.6	Replacement Parts.....	1-7
FIGURE NUMBERS		
1-1.	External Fall Arrest System Types.....	1-3
1-2.	Line Tenser - Transfastener Type.....	1-4
1-3.	Line Tenser - Shuttle Type.....	1-4
1-4.	Slip Indicator - System OK (Transfastener Type only).....	1-4
1-5.	Slip Indicator - Remove From Service (Transfastener Type only).....	1-4
1-6.	Intermediate Bracket - Original/Deflection Shape.....	1-5
1-7.	Cable Fall Arrest.....	1-5
1-8.	External Fall Arrest System Components - Transfastener Type.....	1-8
1-9.	External Fall Arrest System Components - Shuttle Type.....	1-9

This Page Intentionally Left Blank

SECTION 1. INSPECTION, CARE, AND USE OF EXTERNAL FALL ARREST SYSTEM

1.1 PRODUCT USE

The external fall arrest system is available for the following JLG Products:

Model	Platform Options	Tire Requirements	Accessory Counter-weight	Prohibited Options
400S/460SJ (S/N 0300146621 to Present)	1001186333S (ANSI & CSA Spec) (36" x 72")	Foam-Filled or Solid		Tube Rack, Container Storage Tray, SkyGlazier, Cable Tray Carrier
E/M450A (S/N 0300109442 to Present)	1001186333S (ANSI & CSA Spec) (36" x 72") 1001186388S (ANSI & CSA Spec) (30" x 60")	Foam-Filled or Solid		1/2" Airline, Platform Worklights, Pipe Racks, Mesh to Top Rail
E/M450AJ (S/N 0300109442 to Present)	1001186388S (ANSI & CSA Spec) (30" x 60")	Foam-Filled or Solid		1/2" Airline, Platform Worklights, Pipe Racks, Mesh to Top Rail
E600/M600 (S/N 0300188650 to Present) E600J, M600J (S/N 0300097060 to Present)	1001186333S (ANSI, ANSI Export, CSA, Japan & UL EE Spec) (36" x 72") 1001186388S (ANSI Export Spec) (30" x 60")	Foam-Filled		Mesh to Mid Rail, Mesh to Top Rail, Platform Top Rail Extension, Weld Leads, SkyGlazier, Pipe Racks
450A Series II (USA Manufactured - S/N 0300088741 to Present) (6ft - S/N 0300088741 to Present) (5ft - S/N 0300182240 to Present)	1001186333S (ANSI & CSA Spec) (36" x 72") 1001186388S (ANSI & CSA Spec) (30" x 60")	Foam-Filled (12 x 16.5 or 33/15.50 x 16.5" only)		Platform Top Rail Extension, SkyGlazier, Pipe Racks, Mesh to Top Rail, Container Storage Tray, SkyCutter
450AJ Series II (USA Manufactured - S/N 0300138555 to Present)	1001186388S (ANSI & CSA Spec) (30" x 60")	Foam-Filled (12 x 16.5 or 33/15.50 x 16.5" only)		Platform Top Rail Extension, SkyGlazier, Pipe Racks, Mesh to Top Rail, Container Storage Tray, SkyCutter
600A, 600AJ (8ft Chassis Machines Only) (6ft - S/N 0300128330 to Present) (8ft - S/N 0300080181 to Present)	1001186333S (ANSI, ANSI Export, CSA & Japanese Spec) (36" x 72") 1001186334S (ANSI, ANSI Export & CSA Spec) (36" x 96")			Mesh to Mid Rail, Mesh to Top Rail, Platform Top Rail Extension, Rail Mounted Tray, SkyGlazier, Pipe Racks and SkyCutter/SkyWelder Combo
600S, 600SJ, 660SJ (6ft - S/N 0300125318 to Present) (8ft - S/N 0300080179 to Present)	1001186333S (ANSI, ANSI Export, CSA & Japanese Spec) (36" x 72") 1001186334S (ANSI & ANSI Export Spec) (36" x 96")			Mesh to Mid Rail, Mesh to Top Rail, Platform Top Rail Extension, Rail Mounted Tray, SkyGlazier, Pipe Racks and SkyCutter/SkyWelder Combo
740AJ**	1001186333S (ANSI & CSA Spec) (36" x 72")	Foam-Filled		Mesh to Top Rail, Platform Top Rail Extension, Rail Mounted Tray, SkyGlazier, Pipe Racks, SkyCutter/Sky-Welder Combo
800A, 800AJ (6ft - S/N 0300128364 to Present) (8ft - S/N 0300080176 to Present)	1001186333S (ANSI, ANSI Export & CSA Spec) (36" x 72") 1001186334S (ANSI, ANSI Export, CSA & CE Spec) (36" x 96")			Mesh to Top Rail, Platform Top Rail Extension, Rail Mounted Tray, SkyGlazier, Pipe Racks, SkyCutter/Sky-Welder Combo

SECTION 1 - INSPECTION, CARE, AND USE OF EXTERNAL FALL ARREST SYSTEM

Model	Platform Options	Tire Requirements	Accessory Counter-weight	Prohibited Options
800S, 860SJ (6 ft - S/N 0300128362 to S/N 0300162810) (8 ft - S/N 0300080174 to S/N 0300162810)	1001186333S (ANSI Spec) (36" x 72") 1001186334S (ANSI Spec) (36" x 96")	Foam-Filled (15-625 or 18-625 only)		Platform Flood Lights, Mesh to Top Rail (36" x 72"), Platform Top Rail Extension, Rail Mounted Tray, SkyGlazier, Pipe Racks, SkyCutter/SkyWelder Combo
800S, 860SJ (6 ft - S/N 0300162810 to 0300182743) (8 ft - S/N 0300162810 to 0300182743)	1001186333S (ANSI Spec) (36" x 72") 1001186334S (ANSI Spec) (36" x 96")	Consult JLG Parts Department for Compatibility Prior to Purchase.		
800S, 860SJ (6 ft - S/N 0300182743 to present) (8 ft - S/N 0300182743 to present)	1001186333S (ANSI Spec) (36" x 72") 1001186334S (ANSI Spec) (36" x 96")	Foam-Filled (15-625)	Required P/N 1001165646 *****	Platform Flood Lights, Mesh to Top Rail (36" x 72"), Platform Top Rail Extension, Rail Mounted Tray, SkyGlazier, Pipe Racks, SkyCutter/SkyWelder Combo
810SJ	1001186334S (ANSI Spec only) (36" x 96")	Foam-Filled (15-625)		
1100SB**	1001186334S (ANSI Spec only) (36" x 96")	Foam-Filled or Solid	Required P/N 0272078*****	
1200/1350SJ* (ANSI Export Spec - S/N 03000147130 to Present) (ANSI Spec - S/N 0300080177 to Present) (Aus Spec - S/N 0300085906 to Present)	1001186333S (ANSI & ANSI Export Spec) (36" x 72") 1001186334S (ANSI & CSA Spec) (36" x 96")	Foam-Filled or Solid	Required P/N 0272078*****	Platform Flood Lights, Mesh to Mid Rail, Mesh to Top Rail, Platform Top Rail Extension, Rail Mounted Tray, SkyGlazier, Pipe Racks, SkyCutter/SkyWelder Combo, Cable Tray Carrier
1250AJP* (6 ft - S/N 0300138710 to Present) (8 ft - S/N 0300136710 to Present)	1001186333S (ANSI & ANSI Export Spec) (36" x 72") 1001186334S (ANSI & CSA Spec) (36" x 96")	Foam-Filled or Solid		Pipe Racks, Mesh to Mid Rail, Mesh to Top Rail, Platform Top Rail Extension, Rail Mounted Tray, SkyGlazier, SkyCutter/SkyWelder Combo
1500SJ*	1001186389S (CE & Aus Spec) (36" x 72") 1001186334S (ANSI Spec) (36" x 96")	Foam-Filled or Solid	Required P/N 0272078*****	Pipe Racks, Mesh to Mid Rail, Mesh to Top Rail, Platform Top Rail Extension, Rail Mounted Tray, SkyGlazier, Platform Flood Lights, SkyCutter/SkyWelder Combo, Cable Tray Carrier
1850SJ*	1001186334S (ANSI Spec) (36" x 96") 1001186389S (Aus Spec) (36" x 96")	Foam-Filled		Pipe Racks, Mesh to Mid Rail, Mesh to Top Rail, Platform Top Rail Extension, Rail Mounted Tray, SkyCutter/SkyWelder Combo, SkyGlazier, Platform Flood Lights

* Requires Machine Recalibration.
 ** Standard Equipment with Fall Arrest Platform.
 *** 1250 AJP Soft Touch - Prohibited on 8 ft. Fall Arrest, Prohibited on 6 ft. Fall Arrest Prior to S/N 0300138710.
 **** 1500SJ Soft Touch - Available on ANSI spec machines, Prohibited on CE & Australian Spec machines.
 ***** Counter weight required, unless machine was factory equipped with Fall Arrest Platform.

1.2 GENERAL

The external fall arrest system is designed to provide a lanyard attach point while allowing the operator to access areas outside the platform. Exit/Enter the platform through the gate area only. The system is designed for use by one person.

The Operator must use fall protection at all times. A full body harness with lanyard not to exceed 6 ft. (1.8 m) in length, that limits the maximum arrest force to 900 lbs. (408 kg) for the transfaster type and 1350 lbs. (612 kg) for the shuttle type, is required when using the external fall arrest system.

The External Fall Arrest System capacity is 310 lb (140 kg) / one (1) person maximum.

Do not move the platform during use of the external fall arrest system.

⚠ WARNING

DO NOT OPERATE ANY MACHINE FUNCTIONS WHILE OUTSIDE OF THE PLATFORM. BE CAREFUL WHEN ENTERING/EXITING THE PLATFORM AT ELEVATION.

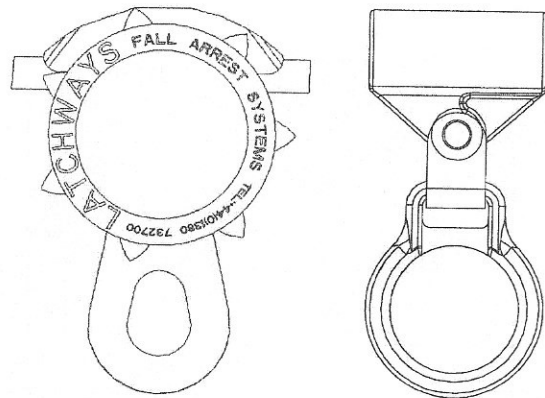
NOTICE

IF THE EXTERNAL FALL ARREST SYSTEM IS USED TO ARREST A FALL OR IS OTHERWISE DAMAGED, THE ENTIRE SYSTEM MUST BE REPLACED AND PLATFORM FULLY INSPECTED BEFORE RETURNING TO SERVICE.

External Fall Arrest System Types

NOTE: There are two types of External Fall Arrest Systems - Transfaster Type and Shuttle Type. Both operate identically with minor component differences.

Refer to the figure below and Figure 1-8., External Fall Arrest System Components - Transfaster Type and Figure 1-9., External Fall Arrest System Components - Shuttle Type.



Transfaster Type

Shuttle Type

Figure 1-1. External Fall Arrest System Types

1.3 INSPECTION BEFORE USE

The external fall arrest system must be inspected before each use of the aerial work platform. Replace components if there are any signs of wear or damage.

Before each use, perform a visual inspection of the following components:

- Cable: Inspect cable for proper tension, broken strands, or any signs of corrosion.
- Fittings & Brackets: Ensure all fittings are tight and there are no signs of fractures. Inspect brackets for any damage.
- Transfaster or Shuttle: Inspect for signs of damage. Ensure transfaster or shuttle is free and slides properly through all intermediate supports.
- Attaching Hardware: Inspect all attaching hardware to ensure there are no missing components and hardware is properly tightened. Transfaster type only - Ensure star wheels rotate freely.
- If equipped with Transfaster Type Trolley ensure the star-wheel rotates freely. A silicone lubricant may be used to improve starwheel rotation.

Inspecting Line Tenser

Cable tension is adjusted using the Line Tenser. The Line Tenser is the disc at the end of the cable (shown below). When proper tension is achieved, the disc will spin by hand. When less than proper tension is present the disc will not turn by hand. The cable will stretch normally over time. To tension the cable, rotate the turnbuckle until proper tension is achieved.

NOTE: Rotate open or closed body turnbuckles using an appropriately sized Phillips screwdriver or rod as a lever.

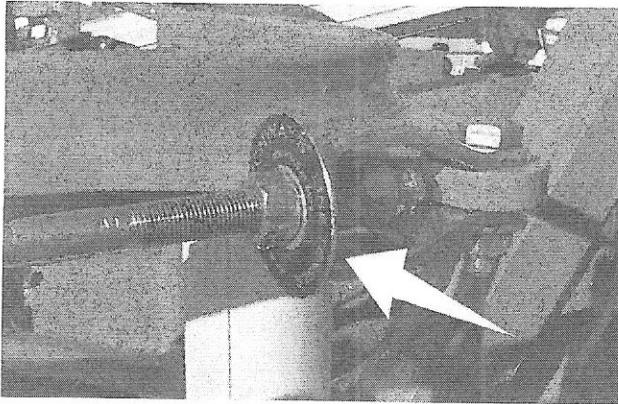


Figure 1-2. Line Tenser - Transfastener Type

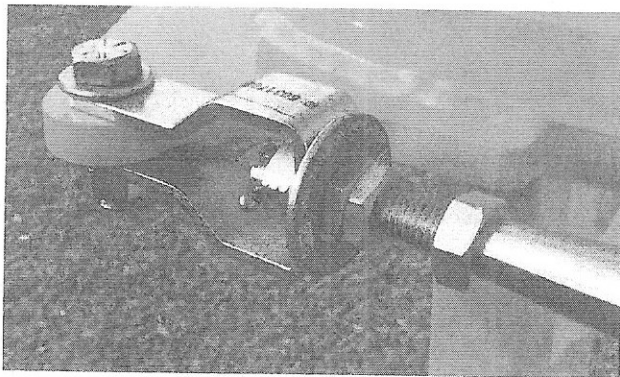


Figure 1-3. Line Tenser - Shuttle Type

Inspecting Slip Indicator

The slip indicator (used only on a Transfastener Type system) is the short tube crimped beside the end connection of the cable.

NOTICE

IF THE CABLE SLIPS FROM THE END CONNECTION A GAP WILL BE PRESENT BETWEEN THE SLIP INDICATOR AND THE END CONNECTION. NO GAP IS ACCEPTABLE. A CABLE THAT IS SLIPPED SHOULD BE TAKEN OUT OF SERVICE AND THE SYSTEM REPLACED.

Shown below is the slip indicator as it should appear.

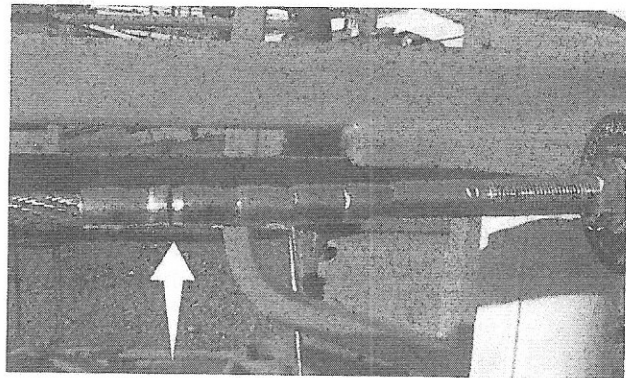


Figure 1-4. Slip Indicator - System OK (Transfastener Type only)

Shown below is the slip indicator with a gap, signifying the external fall arrest system should be replaced immediately.

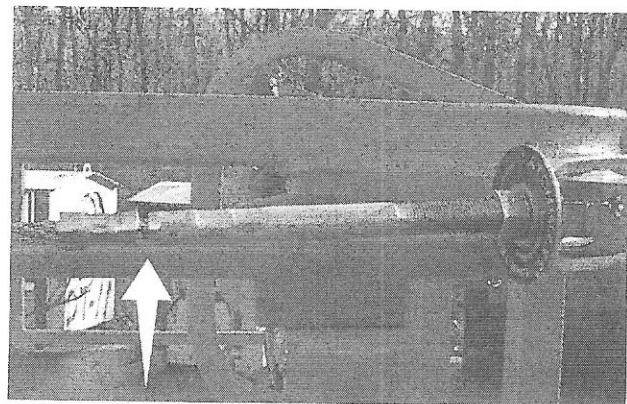


Figure 1-5. Slip Indicator - Remove From Service (Transfastener Type only)

Inspecting the Shuttle Type Fall Arrest System for a Fall Occurrence

Inspect the intermediate brackets shown in Figure 1-7., Cable Fall Arrest. If any of these brackets are deflected more than a 1/2 inch (see Figure 1-6., Intermediate Bracket - Original/Deflection Shape) then the system should be replaced.

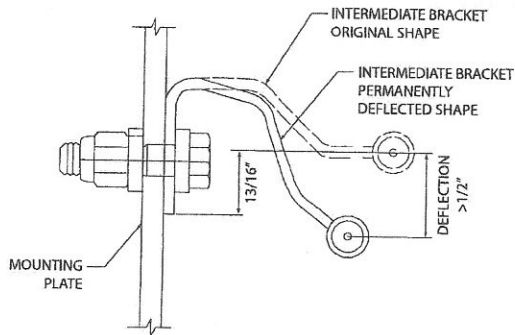


Figure 1-6. Intermediate Bracket - Original/Deflection Shape

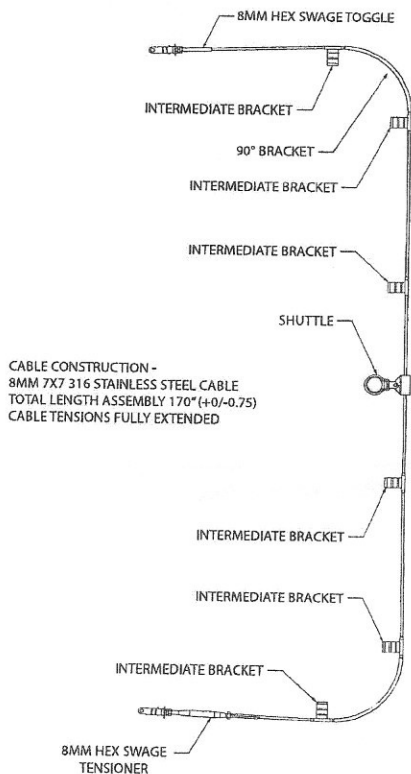


Figure 1-7. Cable Fall Arrest

1.4 ANNUAL INSPECTION AND SERVICE

NOTICE

THE EXTERNAL FALL ARREST SYSTEM REQUIRES AN ANNUAL INSPECTION AND SERVICE. ANNUAL INSPECTION AND SERVICE MUST BE PERFORMED BY A COMPETENT PERSON OTHER THAN THE USER.

Refer to Section 1.3, Inspection Before Use for Annual Inspection criteria.

If inspection services are required, contact:

Flexible Lifeline Systems
14325 West Hardy Rd.
Houston, TX 77060
Phone: 281-448-8821

1.5 INSTALLATION

Installation requires bolting the ends of the cable to the platform with the supplied drilled bolt, castle nut, and split pin. The drilled bolts only need to be tightened enough to fully engage all of the threads of the castle nut and then further just enough to install the split pin.

Intermediate supports are bolted to the platform using 1/2"-13NC Grade 8 bolts, flat washers, and locknuts.

- Intermediate supports used with the transfaster type system are adjusted to an angle slightly below horizontal to improve movement of the transfaster.
- Intermediate supports used with the shuttle type system are not adjustable.

Ensure all bolts and locknuts are tightened properly. Tension the cable with the turnbuckle until the line tenser spins. Tighten jam nuts against the turnbuckle to hold it in place.

NOTE: Rotate open or closed body turnbuckles using an appropriately sized Phillips screwdriver or rod as a lever.

1.6 REPLACEMENT PARTS

Refer to the applicable Illustrated Parts Manual for your machine to identify and order correct replacement parts.

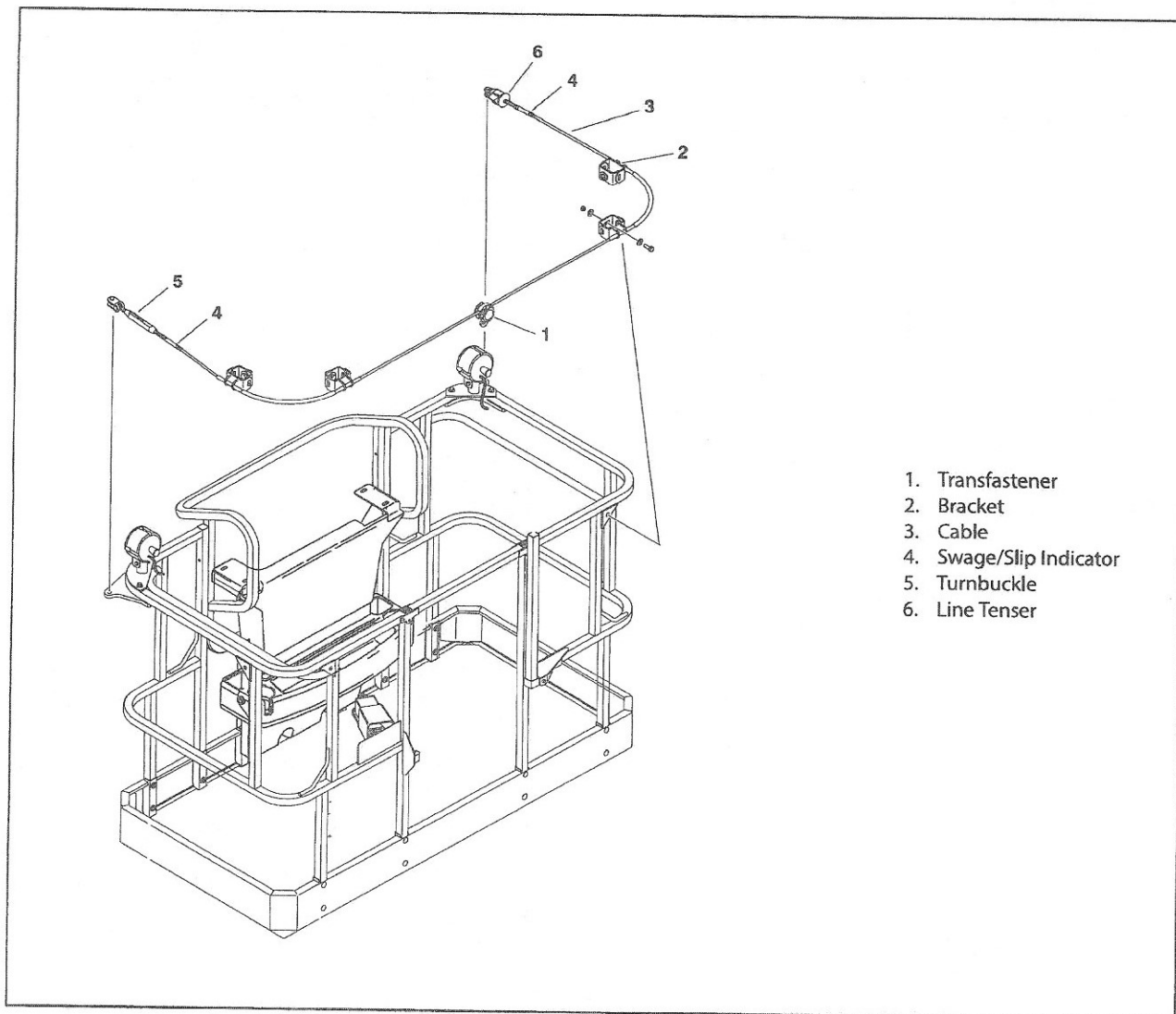


Figure 1-8. External Fall Arrest System Components - Transfastener Type

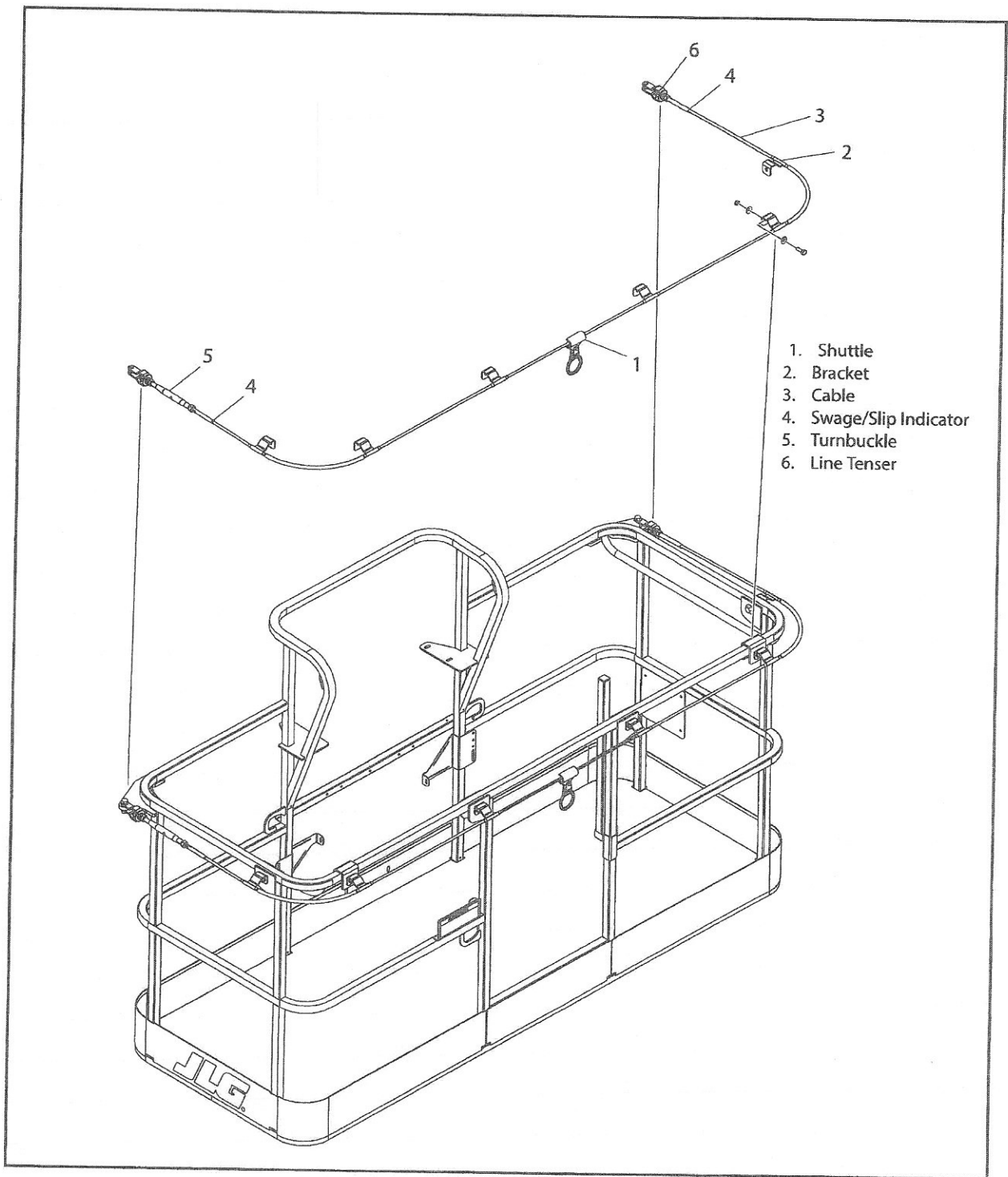
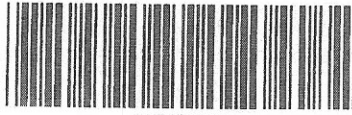


Figure 1-9. External Fall Arrest System Components - Shuttle Type



3128935



An Oshkosh Corporation Company

Corporate Office
JLG Industries, Inc.
1 JLG Drive
McConnellsburg, PA 17233-9533 USA
☎ **(717) 485-5161 (Corporate)**
☎ **(877) 554-5438 (Customer Support)**
☎ **(717) 485-6417**

Visit our website for JLG Worldwide Locations.
www.jlg.com